



# TRADE ACADEMY DUAL ENROLMENT PROGRAMMES

## Programmes for Schools

The Land Based Trade Academy is a partnership between contributing secondary schools, their students, and NTA.

The programmes are practical based with some theory.

Literacy and numeracy units are embedded into the programme.

Students will work towards achieving NCEA Level 1, 2 and 3

- Agriculture
- Animal Care
- Apiculture
- Equine
- Horticulture
- Hard Landscape & Civil Construction
- Transport, Logistics & Warehousing
- Welding & Light Engineering
- Automotive Studies
- Psychology



## LAND BASED TRADES ACADEMY

### PROGRAMME LIST:

<b>NTA Level 2 programmes</b>	<b>Credits</b>	<b>Dates</b>	<b>Page</b>
Agriculture - NZ Certificate in Primary Industry Skills	40+ credits	07/02/25 - 13/11/25	5-7
Animal Care - Vocational Pathway	40+ credits	07/02/25 - 13/11/25	9-10
Apiculture (Bee Keeping)	40+ credits	07/02/25 - 13/11/25	13-14
Equine - NZ Certificate in Equine Skills	40+ credits	07/02/25 - 13/11/25	15-16
Horticulture - NZ Certificate in Primary Industry Skills	40+ credits	07/02/25 - 13/11/25	18-19
Transport, Logistics & Warehousing programme	40+ credits	07/02/25 - 13/11/25	24-25
Welding and Light Engineering Fabrication	40+ credits	07/02/25 - 13/11/25	26-27
<b>NTA Level 3 programmes</b>	<b>Credits</b>	<b>Dates</b>	<b>Page</b>
Agriculture	40+ credits	07/02/25 - 13/11/25	8
Animal Care - NZ Certificate in Animal Care	40+ credits	07/02/25 - 13/11/25	11-12
Equine - NZ Certificate - Sporthorse Stable Assistant Strand	40+ credits	07/02/25 - 13/11/25	17
Horticulture	40+ credits	07/02/25 - 13/11/25	20
Hard Landscape and Civil Construction	40+ credits	07/02/25 - 13/11/25	22-23
<b>Mixed levels</b>	<b>Credits</b>		<b>Page</b>
Automotive Programme	40+ credits		28-29
Psychology	15 credits		30-31
Bus information			32

# LAND BASED TRADES ACADEMY

## BACKGROUND INFORMATION:

The National Trade Academy has been providing land-based training since 2000. Located on a 70-hectare Training Centre at McLeans Island on the outskirts of Christchurch. NTA is committed to meeting the education and training needs of our students and has expanded into other sectors to offer diverse training opportunities. Essential to this is the provision of a safe supportive learning environment both in the classroom and in the practical environment.

### What do we provide?

Trades Academy programmes are funded by the Ministry of Education and are free to all secondary school students.

### NTA provides:

- All teaching resources, transport and equipment required to deliver the programme
- Transport costs for each student e.g., metro card or fuel payments
- Clothing - a polo shirt and work boots for each student

Our Level 2 programmes are aimed at those students that are working towards NCEA Level 1 & 2.

Our Level 3 programmes are aimed at Year 12 and 13 students who may have achieved NCEA Level 2 and are looking at relevant next steps into employment or further education. The students would benefit from enrolment in a primary industry-focused qualification as a pathway to further study in the industry or employment.

If you are interested in enrolling in a Trades Academy Programme, talk to your secondary school contact or contact National Trade Academy or any one of our partners:

<p><b>NTA</b></p> <p>Ph: 03 3602192 Email: <a href="mailto:marketing@nta.co.nz">marketing@nta.co.nz</a> Address: 890 McLeans Island Road, Christchurch</p>	<p><b>AVON CITY FORD TRAINING SERVICES</b></p> <p>Phil Hayes Ph: 03 2661549 Email: <a href="mailto:phayes@acford.co.nz">phayes@acford.co.nz</a> Address: 162 Main South Road, Sockburn, Christchurch</p>	<p><b>VISION COLLEGE</b></p> <p>Ph: 03 3778878 Email: <a href="mailto:hello@visioncollege.co.nz">hello@visioncollege.co.nz</a> Address: 20 Twigger Street, Addington, Christchurch</p>
--	--	--

## LAND BASED TRADES ACADEMY

### LITERACY AND NUMERACY:

---

Literacy and Numeracy is available for all of our programmes if required. Included are 10 literacy and 10 numeracy credits for a total of 20 NCEA level 1 credits.

Literacy and Numeracy Unit Standards		Version Number	NZQF Credits level 1
26622	Write to communicate ideas for a purpose and audience	5	4
26624	Read texts with understanding	6	3
26625	Actively participate in spoken interactions	7	3
26623	Use number to solve problems	5	4
26626	Interpret statistical information for a purpose	5	3
26627	Use measurement to solve problems	5	3
<b>Total credits</b>			<b>20</b>

---

# AGRICULTURE LEVELS 2 & 3



## STUDENT TESTIMONIAL

“I have loved meeting new people and learning new tasks that I would never have learned if I didn’t enrol at NTA.”

# New Zealand Certificate in Primary Industry skills (Agriculture) Level 2

**Duration:** Part time - One to two years  
**Days:** Thursday and Friday  
**Time:** 9am – 4pm  
**Credits:** 40+ Credits  
**Literacy & Numeracy available if required**



QUALIFICATION NZ2218

## PROGRAMME OUTLINE

The aim of this programme is to provide a sound basis for further education and training for students who are interested in a career in agriculture. The programme is designed to enable students to experience a range of farming activities they are interested in, e.g., farm skills, livestock handling, fencing, agrichemicals, vehicle, and machinery operation.

The Mandatory Safe Work Practice strand (19 Credits) precedes the elective strands:

- Sheep Strand (14 Credits) or the
- Cattle Strand (11 Credits).

The balance of credits to complete a total of 40 is made up by selecting units from the Practical Task Electives.

Programme duration dependent on student's ability, as well as literacy, and numeracy requirements.

NZ2218		NZQF Credits	
Unit Standard	Title	Level 2	Level 3
<b>Mandatory</b>	<b>Safe Work Practice Unit Standards Below</b>		
31656	Demonstrate knowledge of safe work practices in a primary industry operation	10	
19044	Demonstrate knowledge of the legal requirements and hazards associated with tractor use	3	
19053	Operate a motorcycle on flat terrain in the workplace under close supervision	3	
24555	Demonstrate knowledge of the safe operation of a motorcycle	3	
<b>Total Credits</b>		<b>19</b>	
<b>Substitute</b>	<b>Safe Work Practice Unit Standards if required</b>		
24554 (for 19053)	Operate a quad bike on flat terrain in the workplace under close supervision	4	
24557 (for 24555)	Demonstrate knowledge of the safe operation of a quad bike	3	
<b>Total Credits</b>		<b>7</b>	





**NZ2218 Elective Strands to choose from:**

NZ2218		NZQF Credits	
		Level 2	Level 3
Unit Standard	Title		
<b>Sheep Strand</b>			
30211	Dag and ring crutch sheep with prepared equipment	5	
19146	Carry out wool shed tasks during shearing operations	5	
19147	Describe the activities and identify the hazards in a wool shed during shearing from a farm perspective	2	
24641	Demonstrate knowledge of features, attributes, identification, and records for sheep	2	
<b>Total Credits</b>		<b>14</b>	

Cattle Strand			
10082	Demonstrate knowledge of rearing weaner or replacement cattle		4
24623	Demonstrate knowledge of breeds and classes of cattle, and identification and records for cattle	2	
26417	Assist with handling cattle in yards	2	
24835	Identify the location of a fault in electric fences, and replace electric fence components	3	
<b>Total Credits</b>		<b>11</b>	

Practical Tasks	Elective Unit Standards below to complete a balance of 40 Credits		
27213	Identify and interpret agrichemical product information, and describe safety procedures when working with agrichemicals	5	
21556	Control weeds under supervision	2	
24833	Identify and maintain fencing tools and equipment, and identify fencing construction materials and wire types	3	
24832	Open and draw out a coil of wire, tie knots, join wire, and prepare wire for transport and storage	5	
19112	Check and report on livestock	4	
24630	Assist with livestock grazing management, and feed livestock under direct supervision	4	
19106	Assist with handling livestock when moving and drafting, and when livestock are distressed	4	
26417	Assist with handling cattle in yards	2	

# Agriculture Level 3

**Duration:** Part time - One to two years  
**Days:** Thursday and Friday  
**Time:** 9am – 4pm  
**Credits:** 40+ Credits  
**Literacy & Numeracy available if required**



## PROGRAMME OUTLINE

The programme is targeted at individuals who either have some experience or who have a desire to work in a primary industry workplace. This qualification covers the skills and knowledge of factors that contribute to pastoral livestock, infrastructure, and maintenance in the general agriculture industry.

Programme duration dependent on individual ability and literacy and numeracy requirements.

Agriculture Level 3		NZQF Credits
Unit Standard	Title	Level 3
28920	Demonstrate knowledge of factors which contribute to pastoral livestock feed demand	5
18	Demonstrate knowledge of animal anatomy and physiology	4
28896	Maintain infrastructure in a primary industry workplace	5
19115	Handle and move livestock	6
23542	Describe personal and external factors, and strategies to manage factors, that contribute to injury in a rural workplace	5
29297	Operate and maintain a chainsaw in a land-based context	8
36	Select fencing support materials	4
37	Install fencing wire	6
572	Describe electric fencing components and systems	5
<b>Total</b>		<b>48</b>



---

## **ANIMAL CARE LEVELS 2&3**



### **STUDENT TESTIMONIAL**

"I love having the interaction with all the different animals at the farm park. There is sometimes a dog in the class to have cuddles with too, which is a bonus! I also love the fact that we get hands-on experience at the farm park."

## Vocational Pathway in Animal Care Level 2

**Duration:** Part time - One to two years  
**Days:** Thursday and Friday  
**Time:** 9am – 4pm  
**Credits:** 40+ Credits  
**Literacy & Numeracy available if required**



### PROGRAMME OUTLINE

The Animal Care Level 2 programme is a mixture of theory and practical elements involving hands-on work at our on-site farm park.

Practical units are normally taught at the beginning and end of each year with the theory only topics in the middle of the year when the weather is wetter and colder.

The programme covers a range of animals including rabbits, guinea pigs and dogs, to poultry, sheep, cattle and many more. The course will give students an introduction to the animal care industry and allow them to progress onto the Animal Care Level 3 programme.

Programme duration dependent on individual ability and literacy and numeracy requirements.

ANIMAL CARE UNIT STANDARD		NZQF Credits	
Unit Standard	Title	Level 2	Level 3
12383	Explore career options and their implications	3	
19112	Check and report on livestock	4	
19152	Assist with the preparation and handling of lambs for docking	2	
20797	Describe farm practices and farm animal behaviour	3	
21382	Demonstrate knowledge of health and behaviour, and provide husbandry for ornamental fish	2	
5152	Monitor health, provide husbandry for, and handle horses	5	
1277	Communicate information in a specified workplace	3	
1648	Clean a stable	4	
1656	Groom a horse	3	
19116	Demonstrate knowledge of livestock behaviour and welfare in a primary industry operation	3	
24623	Describe breeds and classes of cattle, and identification and records for cattle	2	
24641	Describe the features, attributes, identification, and records for sheep	2	
5151	Monitor health, provide husbandry for, handle, and transport caged birds	3	
7337	Identify, handle, transport, and care for dogs		4
5148	Identify, handle, transport, and care for cats		4
<b>Total credits (Level 2 and 3 combined)</b>		<b>47</b>	

# New Zealand Certificate in Animal Care Level 3

QUALIFICATION NZ2487

**Duration:** Part time - One-two years  
**Days:** Thursday and Friday  
**Time:** 9am – 4pm  
**Credits:** 40+ credits  
**Literacy & Numeracy available if required**



## PROGRAMME OUTLINE

The New Zealand Certificate in Animal Care Level 3 is an exciting Animal Care programme which covers a variety of practical and theory.

We are lucky to have the Arion Farm Park on site, of which we can utilize for our Animal Husbandry skills.

The course covers companion animals and legislative units within the animal care field, from dogs to animal welfare.

Students who complete this certificate have gone on to work in pet shops, catteries, kennels, and vet clinics.

After completing this qualification there is the option of further studies, including:

- Diploma in Veterinary Nursing or New Zealand Certificate in Rural Animal Technology.
- New Zealand Certificate in Animal Management (Level 4) with strands in Canine Behaviour and Training Captive Wild Animals and Companion Animals.
- New Zealand Certificate in Animal Healthcare Assisting (Level 4) Rural Animal Strand

Students will gain credits towards the New Zealand Certificate in Animal Care Level 3 over one to two years, depending on individual ability.

(Unit standards are on next page)



Level 3 continued on next page

# New Zealand Certificate in Animal Care Level 3

QUALIFICATION NZ2487

**Duration:** Part time - One to two years  
**Days:** Thursday and Friday  
**Time:** 9am – 4pm  
**Credits:** 40+ credits  
**Literacy & Numeracy available if required**



New Zealand Certificate in Animal Care level 3		NZQF Credits	
Unit Standard	Title	Level 2	Level 3
<b>Health and Safety, Interpersonal Relationships and Ethical Animal Behaviour</b>			
5189	Apply health and safety and hazard control when working in an animal facility		4
<b>The Animal Welfare Act 1999 and Animal Facility Hygienic Practices</b>			
21380	Describe animal facility environmental hygiene and carry out hygienic practices		5
31504	Describe and apply the Animal Welfare Act 1999 to a work role in an animal facility		3
<b>Companion Animal Health and Behaviour, and Emergency Care</b>			
31500	Describe emergency care of injured animal patients		5
31503	Carry out companion animal examination, and record and report variations to normal health and behaviour		4
<b>Companion Animal Anatomy, and Zoonoses</b>			
5180	Describe companion animal anatomy, cells, body tissues and systems		6
19894	Describe zoonoses, notifiable exotic zoonoses, and their control, in New Zealand		5

Unit Standard	Title	Level 2	Level 3
<b>Care for Dogs</b>			
7337	Identify, handle, transport, and care for dogs		4
31502	Describe dog feeding, health, and housing, and carry out routine health procedures		5
<b>Care for Cats</b>			
5148	Identify, handle, transport, and care for cats		4
31501	Describe cat feeding, health, and housing, and carry out routine health procedures		5
<b>Care for Caged Birds</b>			
5151	Monitor health, provide husbandry for, handle, and transport caged birds	3	
32801	Describe bird feeding, health, housing, and routine health procedures		3
<b>Care for Rabbits and Rodents</b>			
32804	Monitor health, provide husbandry for, handle, and transport rodents		3
32805	Monitor health, provide husbandry, handle, and transport rabbits		3



---

# APICULTURE





## PROGRAMME OUTLINE

The purpose of this programme is to provide the apiculture industry with people with a basic set of skills and the underpinning knowledge of keeping hives in an apiary. Successful learners will be able to work confidently around bees in an apiary and complete a range of seasonal tasks required to keep the hives healthy and produce a honey crop. In addition, beehive construction and equipment used to manipulate the hives, manage hive health, and extract honey is all covered in the programme.

ID		NZQF Credits
Unit Standard	Title	Level 2
31656	Demonstrate knowledge of safe work practices in a primary industry operation	10
30797	Demonstrate understanding of beekeeping equipment and honey extraction, and use equipment for routine operations	4
30782	Feed bees in beehives under close supervision	6
30794	Demonstrate understanding of managing bee behaviour, and assist with beehive manipulations, under close supervision	7
30783	Open and close beehives under close supervision	5
30796	Demonstrate understanding of the process, role and significance of plant pollination by bees	3
30791	Demonstrate understanding of honey bee physical features, castes, bee stings and beehive health	5
<b>Total credits</b>		<b>40</b>



---

# EQUINE LEVELS 2&3



## STUDENT TESTIMONIAL

“The tutor is really supportive and knowledgeable. This makes the course really fun, and the classroom/stable yards are a positive environment to be in. There is a good balance between theory and practical and you’re able to apply the theory work to real-life situation.”

# New Zealand Certificate in Equine Level 2

QUALIFICATION NZ2375

**Duration:** Part time - One - Two Years  
**Days:** Thursday and Friday  
**Time:** 9am – 4pm  
**Credits:** 40+ Credits  
**Literacy & Numeracy available if required**



## PROGRAMME OUTLINE

The purpose of this programme is to provide individuals with the skills and knowledge to enable them to seek employment as stable hands or stud assistants in a sector of the equine industry.

Course duration dependent on individual ability and literacy and numeracy requirements.

EQUINE UNIT STANDARD		NZQF Credits	
Unit Standard	Title	Level 2	Level 3+
23973	Perform safe work practices with an outside contractor in an equine industry	3	
29165	Apply skills for employment in an equine industry workplace	5	
29168	Care for a group of horses in a paddock, maintain paddocks, and install and dismantle temporary electric fences	10	
6623	Demonstrate horse clipping technique	3	
14594	Identify the external anatomy, and identify and report signs of good health, ill health and emergencies involving horses	4	
29171	Carry out routine, minor, or temporary maintenance of equine facilities	5	
1648	Clean a stable	4	
6579	Clean and maintain saddlery for horses	2	
29167	Prepare horses for travel, and load and unload	4	
1660	Identify, catch, and prepare a horse for exercise	5	
19945	Lunge a horse for exercise	5	



**New Zealand Certificate Equine  
Level 3  
Sporthorse Stable Assistant Strand**

**Duration:** Part time - One to two years  
**Days:** Thursday and Friday  
**Time:** 9am – 4pm  
**Credits:** 40+ Credits  
**Literacy & Numeracy available if required**



QUALIFICATION NZ2376

**PROGRAMME OUTLINE**

The purpose of this qualification is to provide the equine industry with individuals who have the skills and knowledge to assist in the stabling, care, and/or exercise of horses in the performance horse sectors of the equine industry.

EQUINE UNIT STANDARD		NZQF Credits	
Unit Standard	Title	Level 2	Level 3+
29173	Communicate with team members and stakeholders, and comply with employment contract obligations in an equine workplace		5
29172	Demonstrate knowledge of horse feeds, nutritional and feed requirements and problems, and feed horses in training		5
29174	Provide routine care to horses in training		5
6580	Demonstrate knowledge of hazards, routine health care, emergency responses, and ongoing care of horses		4
1626	Describe the benefits of lunging and lunge a horse for training		4
1660	Identify, catch, and prepare a horse for exercise	5	
25443	Demonstrate knowledge of the gear and procedures used in the exercise of horses		6
1623	Prepare a horse for show	3	
1650	Prepare a horse for travel by road, and load and unload		3
<b>Total Credits</b>		<b>44</b>	

Module	Identify, report, and treat problems of horses in training (Level 3)
Module	Exercise horses in training for a sport horse discipline (Level 3)

OPTIONAL EQUINE UNIT STANDARD		NZQF Credits	
Unit Standard	Title	Level 2	Level 3+
1296	Conduct informal interviews		3
4251	Plan a career pathway		3
6582	Ride a horse in a balanced position at walk, trot, and canter on the flat and over undulating country		4
<b>Total Credits</b>		<b>10</b>	



---

# HORTICULTURE LEVELS 2&3



## STUDENT TESTIMONIAL

“It was a good course. Well taught, learnt heaps, a good mix between book work and practical work, fun and a genuinely positive place to be.”

# Horticulture Level 2

**Duration:** Part time - One to two years  
**Days:** Thursday and Friday  
**Time:** 9am – 4pm  
**Credits:** 40+ Credits  
**Literacy & Numeracy available if required**



QUALIFICATION NZ2218

## PROGRAMME OUTLINE

The focus of this programme is on safe work practices in a horticulture environment and skills relevant to working in various sectors of the horticulture industry. Skills such as plant identification, propagation, handling agrichemicals, maintaining property structures, servicing small engines, and planting shrubs and trees in a landscaping environment.

Programme duration dependent on individual ability and literacy and numeracy requirements.

Pathways:

New Zealand Certificate in Horticulture General (Level 3) (Ref. 2677)

New Zealand Certificate in Horticulture (Level 3) with strands in Nursery Production (Ref: 2678)

Horticulture Unit Standard		NZQF Credits
Unit Standard	Title	Level 2
31656	Demonstrate knowledge of safe work practices in a primary industry operation	10
29492	Care for a nursery crop	5
21556	Control weeds under supervision	2
29669	Use small machinery to carry out a range of routine horticulture tasks	5
21027	Plant and maintain displays of bedding plants	10
29663	Care for trees and shrubs	5
29508	Sow seeds and monitor germination and emergence	5
<b>Total Credits</b>		<b>42</b>



# General Horticulture Level 3

**Duration:** Part time - One to two years  
**Days:** Thursday and Friday  
**Time:** 9am – 4pm  
**Credits:** 40+ Credits  
**Literacy & Numeracy available if required**



## PROGRAMME OUTLINE

This programme covers a range of skills and knowledge which would be useful when seeking entry level employment in the horticulture industry.

Pathways,

New Zealand Certificate in Horticulture Level 4.

ID		NZQF Credits
Unit Standard	Title	Level 2
29838	Plant and care for plants	5
20560	Grow nursery crops in containers	10
29843	Select and prepare cutting material, and harden off rooted cuttings	10
31074	Select and plant plants, and apply mulches, in landscape work	3
12395	Demonstrate knowledge of a horticultural irrigation system	5
29823	Carry out canopy maintenance of trees or vines	5
22175	Describe soil properties and their effect on plant growth	6
<b>Total Credits</b>		<b>44</b>









---

# **HARD LANDSCAPE & CIVIL CONSTRUCTION LEVEL 3**



# Hard Landscape & Civil Construction Level 3

**Duration:** Part time - One to two years  
**Days:** Thursday and Friday  
**Time:** 9am – 4pm  
**Credits:** 40+ Credits  
**Literacy & Numeracy available if required**



## PROGRAMME OUTLINE

The purpose of this programme is to provide the Civil Construction and Hard Landscape industry with individuals who have the skills and knowledge to assist in the use of concrete reinforcing, drainage systems, concrete pads, and the laying of hard surfaces.

The programme is approximately 50% theory and 50% practical to keep students engaged and reinforce their knowledge and consists of unit standards from the Hard Landscape and Civil industries.

As this programme involves using power tools and industry equipment, a strong focus on health and safety will be enforced and must be followed by students at all times.

Programme duration dependent on individual ability and literacy and numeracy requirements.

Hard Landscape and Civil Construction		NZQF Credits
Unit Standard	Title	Level 3
31833	Complete a risk assessment, and develop recording systems for primary industry machinery use	10
31079	Describe and lay hard surfaces in landscape work	8
31078	Describe and use concrete reinforcing in landscape work	6
31076	Operate and maintain power tools and small machinery used in Landscape work	8
31073	Describe water flow and drainage systems, and prepare and lay drainage elements in landscape work	8
22196	Lay a basic concrete pad for landscape work	6
<b>Total Credits</b>		<b>47</b>





---

# Transport, logistics & Warehousing Level 2



## STUDENT TESTIMONIAL

“I came to learn how to drive a car, bonus I can change the wheels and I’ve learnt all about the things inside the car and under the hood.”

# Transport, Logistics & Warehousing programme

## Level 2

**Duration:** Part time - One to two Years  
**Days:** Thursday and Friday  
**Time:** 9am – 4pm  
**Credits:** 40 credits  
**Literacy & Numeracy available if required**



### PROGRAMME OUTLINE

This programme has been designed to introduce students to a range of transport, logistics and warehousing career opportunities and prepare you for the demands that the industry requires in your career choice.

The programme content covers a range of theory knowledge and practical skills that will help you moving forward.

Whilst due to age restrictions, truck driving itself will be out of reach straight away, there are many other career opportunities in the industry which can be accessed prior to obtaining a class 2 or class 4 licence.

Unit Standard	Description	Level	Credits
1735	Demonstrate knowledge of the commercial road transport industry	2	3
15408	Demonstrate knowledge of motor vehicle documentation, describe the primary systems of a motor vehicle	2	4
17676	Carry out a pre-start vehicle check on a vehicle or machine, & start & shut down the vehicle or machine	2	3
21869	Remove and replace road wheels on a vehicle	2	1
17593	Apply safe work practices in the workplace	2	4
19044	Demonstrate knowledge of legal requirements & hazards associated with tractor use	2	3
31913	Operate a basic tractor on flat terrain under close supervision	2	3
31914	Attach & detach a power take off driven 3-point linkage mounted implement to a basic tractor under close supervision	2	2
24555	Demonstrate knowledge of the safe operation of a motorcycle	2	3
19053	Operate a motorcycle on flat terrain in the workplace under close supervision	2	3
19046	Service, repair and maintain primary industry machinery	3	6
29836	Pack and dispatch pre-graded nursery plant products and complete documentation	3	5
<b>Total</b>			<b>40</b>

Part of this programme is introducing students to industry workplaces. There will be regular trips to logistics companies, engineering firms and devanning operations.

---

# Welding Programme







## PROGRAMME OUTLINE

This is a programme for Year 12/13 students and consists of unit standards from the Engineering Industries. The course will work towards the students gaining experience and knowledge using engineering hand tools, power tools, workshop machines and welders. It will also focus on performing engineering maintenance tasks, servicing, and maintaining small engines.

This programme will give students practical knowledge and experience using many different types of tools and equipment. It is approximately 50% theory and 50% practical to keep students engaged and reinforce their knowledge.

As this programme involves using power tools and industry equipment, a strong focus on health and safety will be enforced and must be followed by students at all times.

Programme duration dependent on individual ability and literacy and numeracy requirements.

<b>Welding and Light Engineering Fabrication</b>		<b>NZQF Credits</b>		
Unit Standard	Title	Level 1	Level 2	Level 3
<b>Welding / Engineering</b>				
21911	Demonstrate knowledge of safety on engineering worksites		2	
33135	Demonstrate knowledge of safety and health while welding and thermal cutting			3
29730	Apply good work practices when performing basic fabrication operations under supervision		6	
2396	Demonstrate and apply knowledge of the selection, use and care of portable handheld engineering power tools		4	
2395	Demonstrate and apply knowledge of the selection, use, and care of engineering hand tools		4	
2672	Weld steel to a general purpose industry standard using the gas metal arc welding process			6
21684	Use a MIG welding plant in the automotive industry			3
29560	Demonstrate knowledge of efficient and effective workplace procedures in mechanical engineering		3	
<b>Engines and Servicing</b>				
19047	Demonst the working principles, maintence, and servicing of petrol and diesel engines		2	
4	Maintain hand tools and service small engines used in a primary industry operation		5	
6917	Demonstrate basic chainsaw operation		12	
<b>Total credits</b>		<b>50</b>		

---

# AUTOMOTIVE PROGRAMME



**Avon City Training Services**



## Certificate in Automotive Practices (Level 3)

### PROGRAMME OUTLINE

This training programme has been designed to introduce students to a range of automotive career opportunities and prepare you for the demands that the industry requires in your career choice.

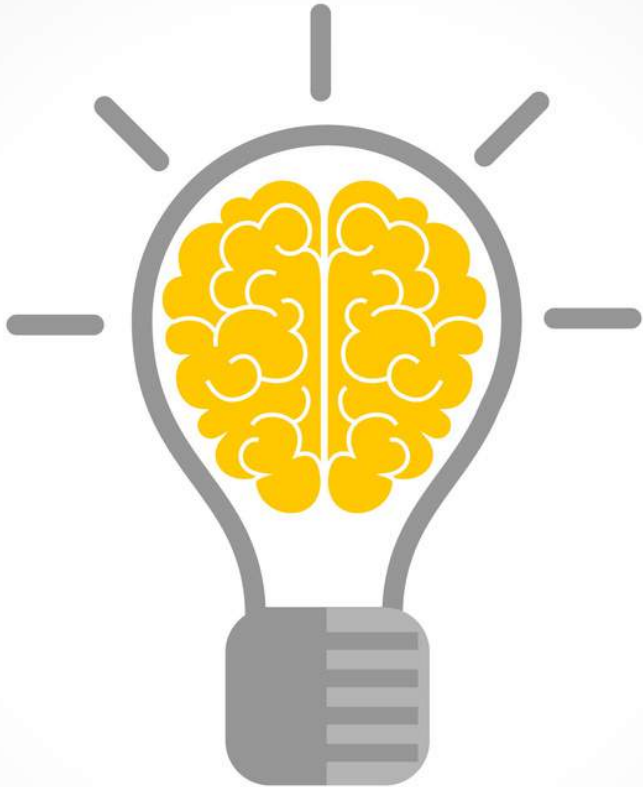
The programme content covers a range of theory knowledge and practical skills that you need to achieve at a high level, as well as preparing you for work in your chosen career.

Certificate in Automotive Practices (Level 3)		NZQF Credits	
Unit Standard	Title	Level 2	Level 3
29579	Demonstrate knowledge of good work habits and safe work practices in the automotive industry	4	
3856	Identify emergency procedures in the motor and related industries		2
29580	Demonstrate good work habits and safe work practices in the automotive industry	4	
30478	Demonstrate knowledge of automotive lubricants	2	
30434	Service a vehicle or machine		3
30567	Demonstrate knowledge of automotive tyres and wheels		3
24458	Prepare to repair, and repair punctures in tubes and tubeless tyres on light vehicles		5
21722	Balance a wheel off a vehicle in the motor industry	2	
30568	Demonstrate knowledge of brake systems		4
30517	Service a brake system on a vehicle or machine		4
30518	Bleed a hydraulic brake system		2
30572	Demonstrate knowledge of vehicle or machine batteries	3	
30556	Service an automotive battery		3
5742	Protect electronics when servicing or repairing a vehicle or machine in the motor industry		2
		<b>15</b>	<b>28</b>
<b>Total credits</b>		<b>43</b>	

Contact Phil Hayes - [phayes@acford.co.nz](mailto:phayes@acford.co.nz)  
Address - 162 Main South Road, Sockburn, Christchurch

---

**PSYCHOLOGY  
PROGRAMME**





## PROGRAMME OUTLINE

1 day per week

This Level 3 Psychology course will help you to understand more about how people think, feel and behave. (University Entrance Achievement Standards)

Topics include: learning about analysing past studies, conducting research in psychology, and understanding different psychological approaches.

ACHIEVEMENT STANDARDS		NZQF Credits	
Unit Standard	Title	Level 2	Level 3
91872	Analyse the interaction between psychological approaches		6
91873	Analyse the significance of a key piece of research and its impact on society		3
91874	Conduct independent psychological research with consultation		3
<b>Total credits</b>			<b>15</b>

Contact - [hello@visioncollege.co.nz](mailto:hello@visioncollege.co.nz)

Address – 20 Twigger Street, Addington, Christchurch

# NATIONAL TRADE ACADEMY BUS INFORMATION

## BUS INFORMATION

---

National Trade Academy will provide travel assistance to all Trade Academy students, paid in arrears. A Metro Card will be provided to all Trade Academy students, or we will top up a student's existing card. The card will be topped up weekly. Please note that the student will need to cover the first week of travel.

Special bus service to NTA from the bus stop opposite The Antarctic Centre.

- All students should be at the bus stop by 8.20am
- The Purple line/Number 3 bus leaves here at 8:30am sharp
- The bus will return students to The Antarctic Centre at 4:30pm.
- There is only one bus extension travelling to NTA in the morning, and one returning in the afternoon.

[go.metroinfo.co.nz](https://go.metroinfo.co.nz)

is the site to go to for planning your journey  
In the search box, put 890 McLeans Island Road  
(the street address for National Trade Academy)